



****AVAILABLE SEPTEMBER 2025****

****GARAGE** **SEPARATE STUDY****

****FURNISHED**** Centrally located close to West Jesmond Metro Station, the shops and amenities of Acorn Road and countless cafe's and restaurants on Osborne Road. well presented throughout, this fine mews house is ideally located and would be perfect for either professional, post-graduate or student sharers.



The accommodation briefly comprises: entrance hall with storage cupboard and stairs to first floor; bedrooms two and a study; the first floor landing gives access to bedroom one with en-suite shower room and a separate bathroom, modern, fully tiled with three piece suite and spot-lighting. To the second floor, a 20ft open plan reception/kitchen with lounge area, storage cupboard, two Velux windows, kitchen area with a range of fitted units and appliances. Externally, a 17ft garage providing off-street parking, early viewings are advised!

Available 14th September 2025 | £1,300pcm |
Furnished | Separate Study | Mews House | Two
Bedrooms | 857 Sq ft (79.6m²) | 20ft Open Plan
Lounge/Kitchen | Bathroom WC & En-Suite |
Garage | Close to Transport Links | Council Tax
Band: D | EPC Rating: C

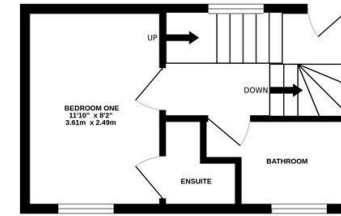
GARAGE BLOCK
159 sq.ft. (14.7 sq.m.) approx.



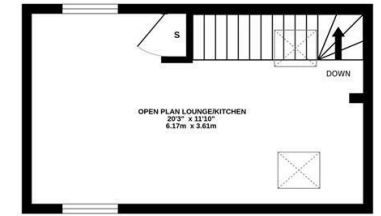
GROUND FLOOR
228 sq.ft. (21.1 sq.m.) approx.



1ST FLOOR
232 sq.ft. (21.5 sq.m.) approx.



2ND FLOOR
239 sq.ft. (22.2 sq.m.) approx.



TOTAL FLOOR AREA : 857 sq.ft. (79.6 sq.m.) approx.

Whilst every attempt has been made to ensure the accuracy of the floorplan contained here, measurements of doors, windows, rooms and any other items are approximate and no responsibility is taken for any error, omission or mis-statement. This plan is for illustrative purposes only and should be used as such by any prospective purchaser. The services, systems and appliances shown have not been tested and no guarantee as to their operability or efficiency can be given.

Made with Metropix ©2024



£1,300 PCM

IMPORTANT NOTE: These particulars and the descriptions and measurements herein do not constitute representation and whilst every effort has been made to ensure accuracy, this cannot be guaranteed.

